

Vent Control

Non-Locking Rotary to Linear



Control Head Industrial

The 165-910 rotary control head is a panel or bracket mounted unit. Brass, stainless steel, and high performance plastic components are used in the design. It is a cost effective solution to convert a light manual rotary motion into a push-pull motion, especially when space is limited. A 270° input rotation provides 1-1/2" of travel and can be specified with either clockwise or counter-clockwise rotation to extend. The control head has a 7/16" thread with two flats for mounting. A 1/4" diameter input shaft with flat will accommodate various customer supplied or directed knobs. A flexible conduit with a .054-inch diameter stainless steel inner wire is attached to the control head. A plain shouldered conduit cap with straight wire or loop ends is a common output connection. Customer specified configurations can be provided as well.



Description:

Vent Control
Industrial Non-Locking
Rotary to Linear

Applications:

- Heater valve control
- A/C vent control

Features:

- Custom engineered assembly
- Travel: 1.50" maximum
- Efficiency: 4 inch / lb maximum to push-pull 5lb
- -25°F — 160°F temp. range
- 270° rotation
- Reverse rotation available
- Dust proof cover available

Vent Control

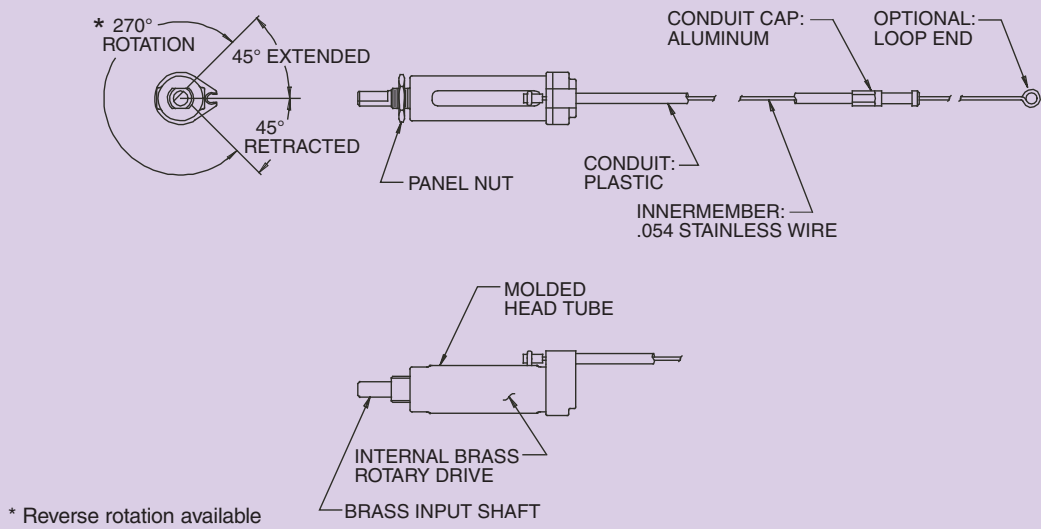
Material

- Stainless Steel
- Inner Wire Brass
- High Performance Plastic

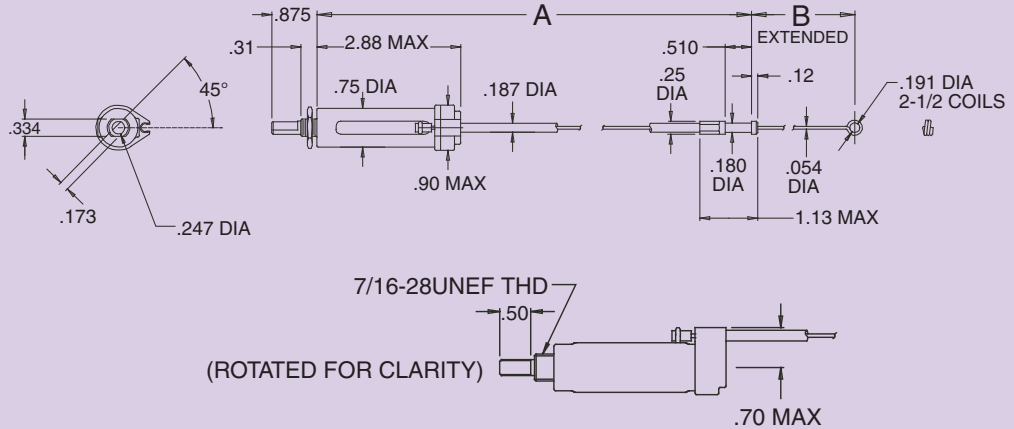
Suggested End Fittings

- Knobs

Components and Terminology



Specifications



All line art dimensions are represented in inches

WARNING!

Since the manufacturer is unable to determine all applications in which a part may be placed, it is the user's responsibility to determine the suitability of the part for its intended use. This is especially true where safety is a factor. Incorrect application or installation may result in property damage, bodily injury, or death. For technical assistance, call 07 3881 0400.

Cablecraft®
Australia Pty Ltd

Cablecraft Australia Pty Ltd
Unit 2, 15 Hinkler Court
PO Box 7292
Brendale, Qld 4500

Tel: 07 3881 0400
Fax: 07 3205 7319

www.sreaustralia.com.au

Linking Motion
& Control...
The Cablecraft
Solution

